

# The Triton Building, Brock Street, NW1

Approximate Gross Internal Area

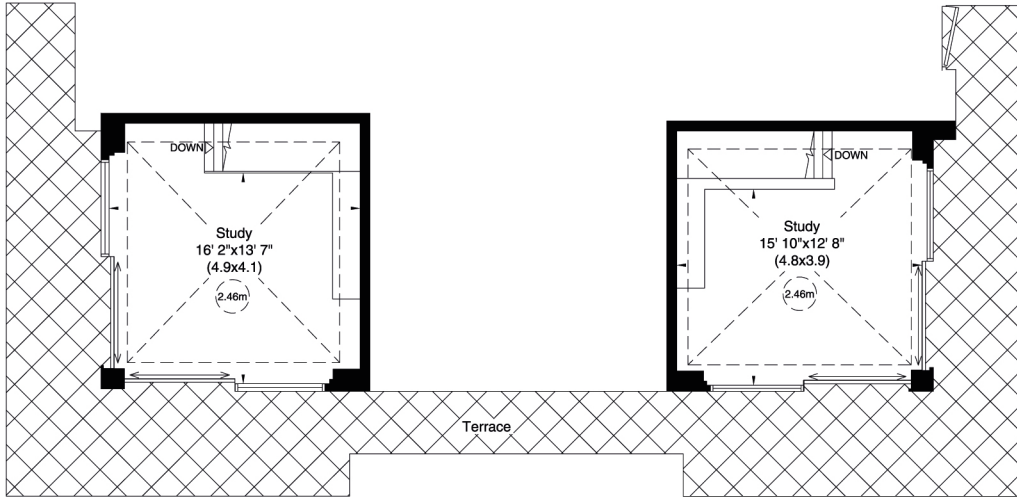
384 sq m/ 4137 sq ft

Storage 14 sq m/ 145 sq ft

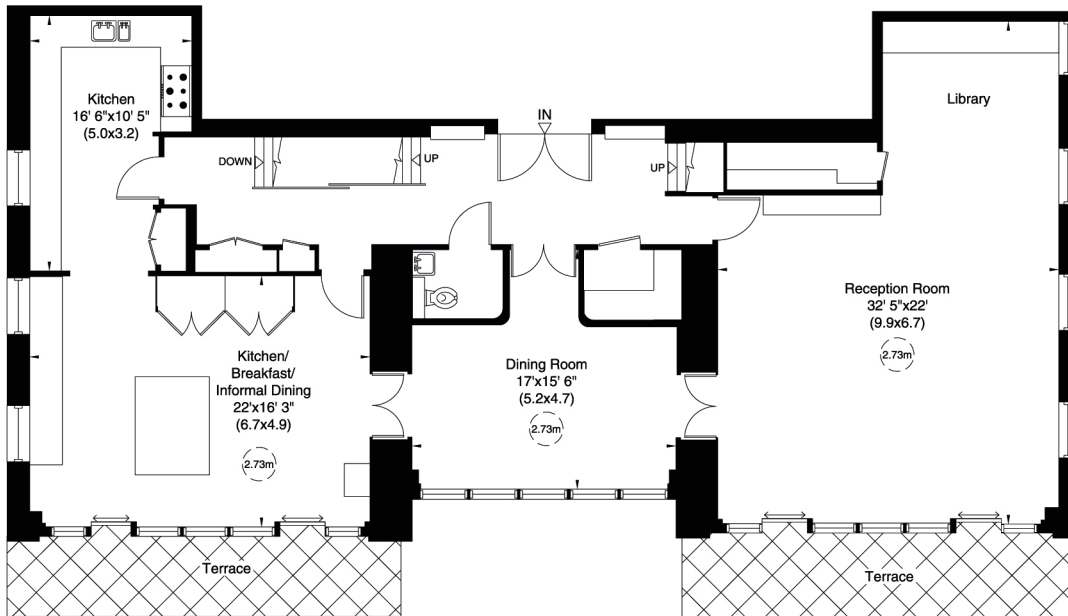
Terrace Area 113 sq m/ 1218 sq ft



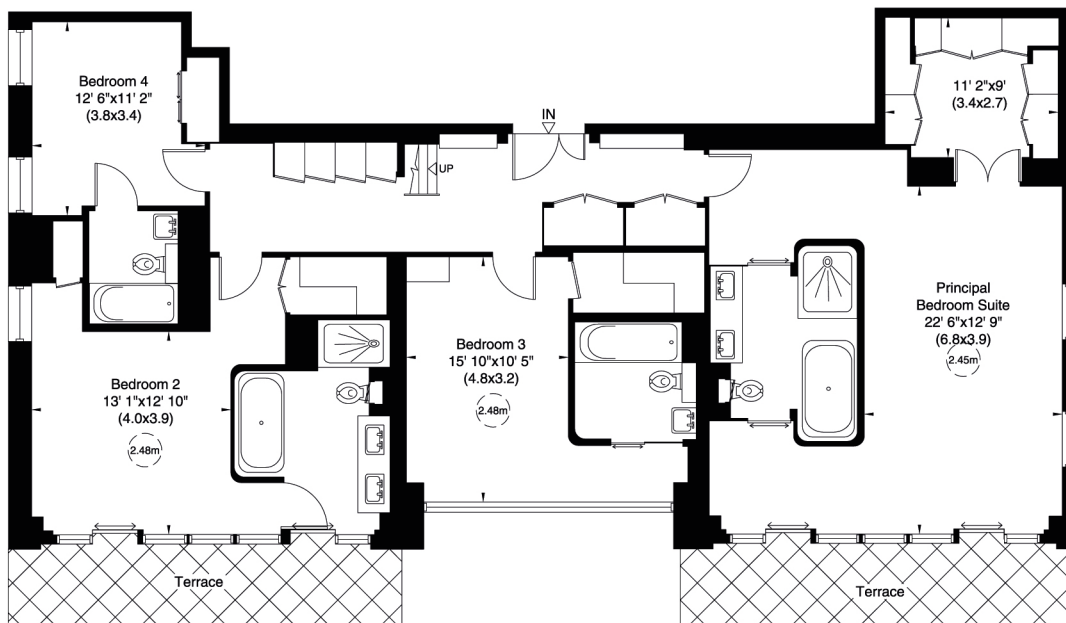
Not to Scale, for identification only



Twenty-fifth Floor



Twenty-fourth Floor



Twenty-third Floor

# The Triton Building, Brock Street, NW1

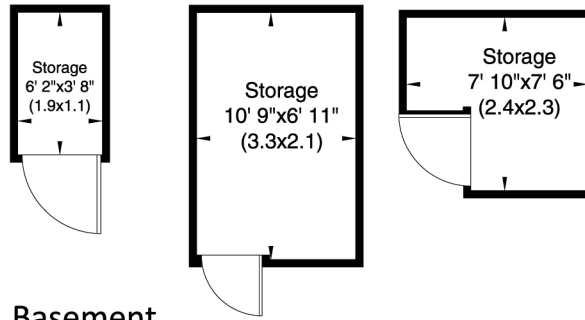
Approximate Gross Internal Area

384 sq m/ 4137 sq ft

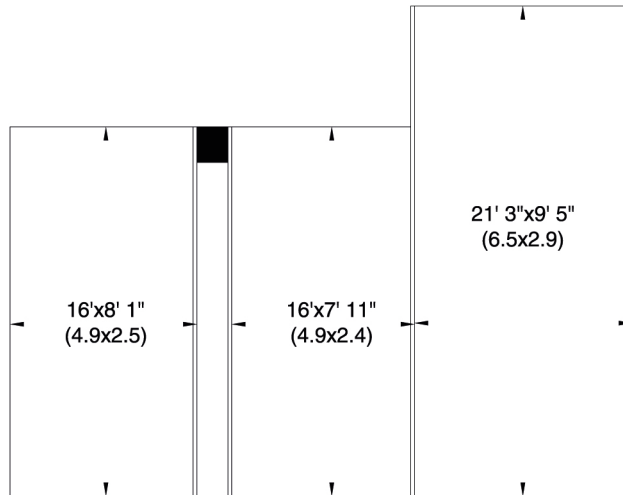
Storage 14 sq m/ 145 sq ft

Terrace Area 113 sq m/ 1218 sq ft

Not to Scale, for identification only



Basement



Parking Spaces

Basement