

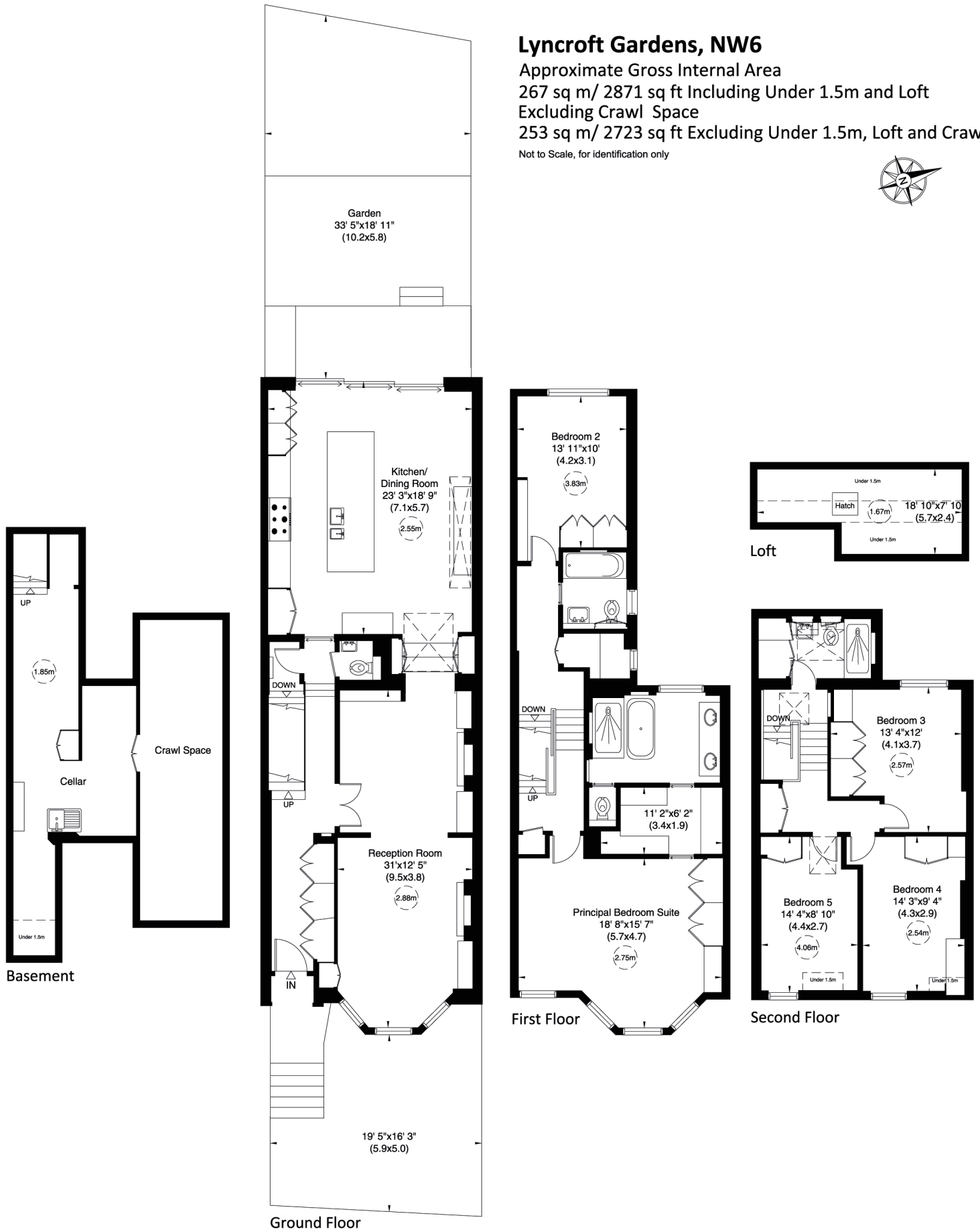
# Lyncroft Gardens, NW6

Approximate Gross Internal Area

267 sq m/ 2871 sq ft Including Under 1.5m and Loft  
Excluding Crawl Space

253 sq m/ 2723 sq ft Excluding Under 1.5m, Loft and Crawl Space

Not to Scale, for identification only



For guidance only and must not be relied upon as a statement of fact.

All measurements and areas are approximate only (and have been prepared in accordance with the current edition of the RICS Code of Measuring Practice).

